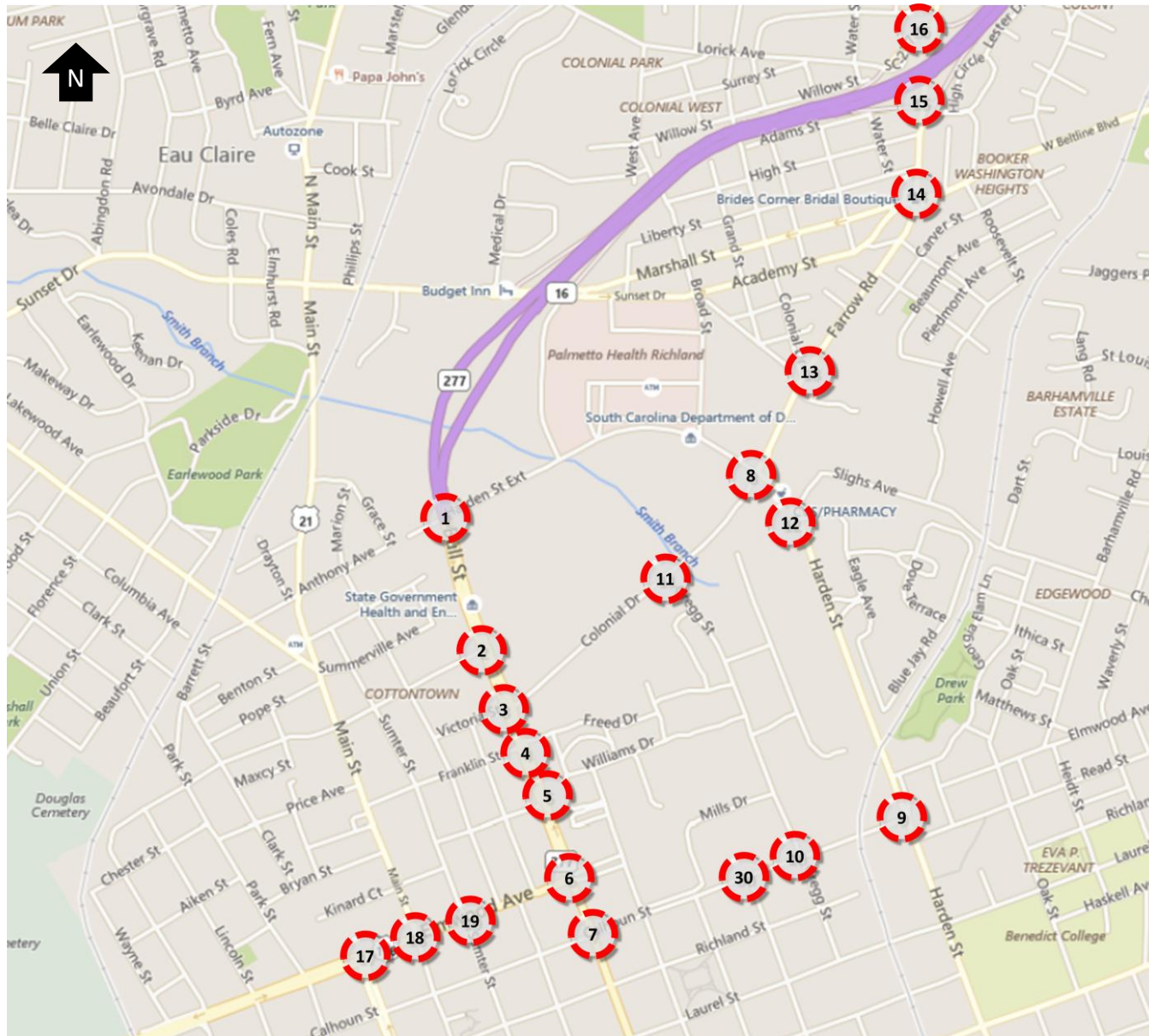
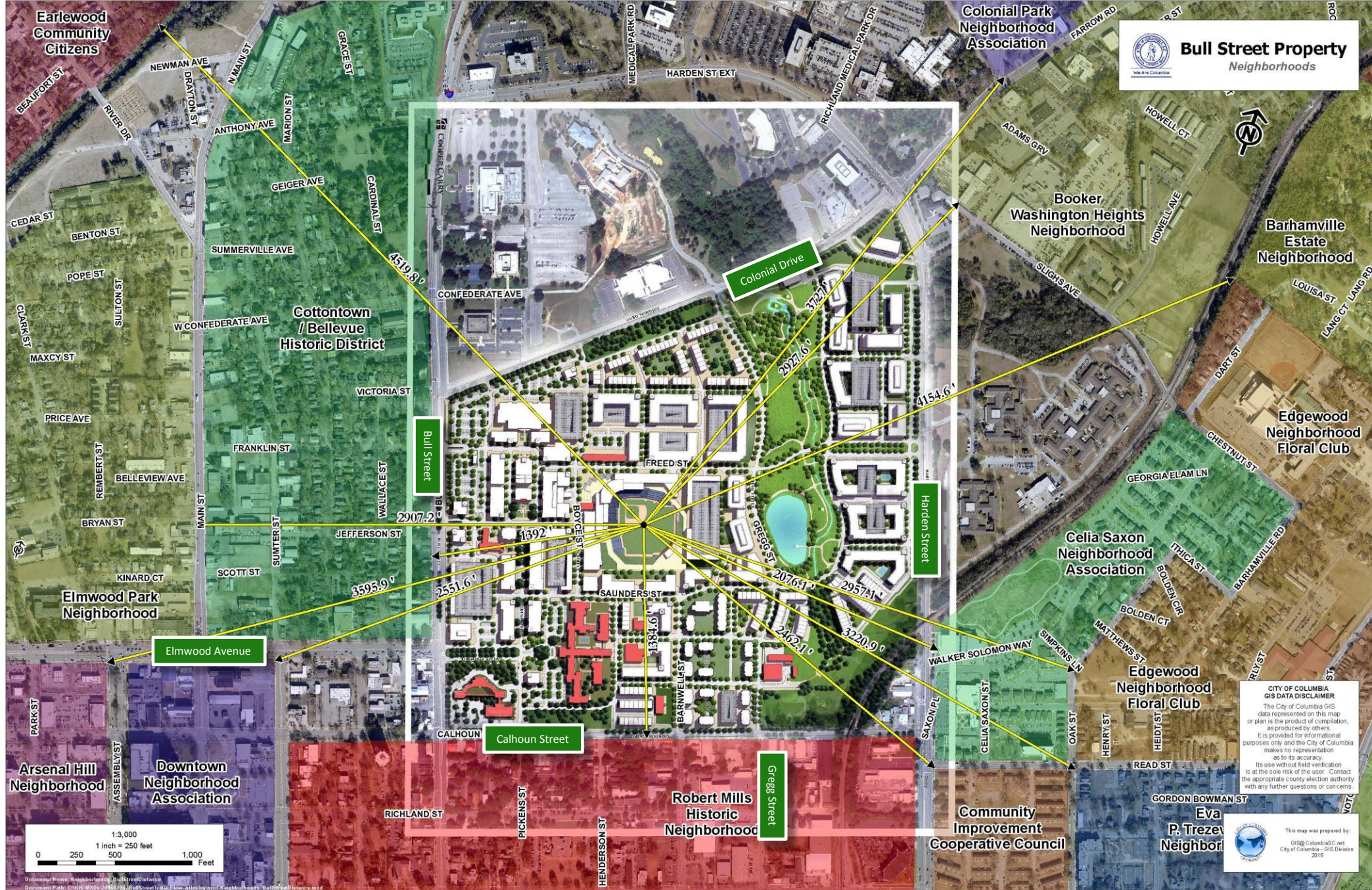


# Bull Street Mixed-Use Development

Figure 1 – Study Area/ Site Location



1. Bull Street at Harden Street Extension
2. Bull Street at Confederate Avenue
3. Bull Street at Colonial Drive
4. Bull Street at Franklin Street/Freed Drive
5. Bull Street at Jefferson Street
6. Bull Street at Elmwood Avenue
7. Bull Street at Calhoun Street
8. Colonial Drive at Harden Street
9. Harden Street at Calhoun Street
10. Calhoun Street at Gregg Street
11. Gregg Street at Colonial Drive
12. Harden Street at Slighs Avenue
13. Colonial Drive at Farrow Road
14. Farrow Road at Beltline Boulevard
15. Farrow Road at 277 NB Ramps
16. Farrow Road at Lorick Avenue/ 277 SB Ramps
17. Elmwood Avenue at Assembly Street
18. Elmwood Avenue at Main Street
19. Elmwood Avenue at Sumter Street
20. Calhoun Street at Barnwell Street



**Bull Street Property**  
Neighborhoods

**CITY OF COLUMBIA  
GIS DATA DISCLAIMER**  
The City of Columbia GIS data represented on this map or plan is the product of compilation, as produced by others. It is provided for informational purposes only and the City of Columbia makes no representation as to its accuracy. Its use without field verification is at the sole risk of the user. Contact the appropriate county election authority with any further questions or concerns.

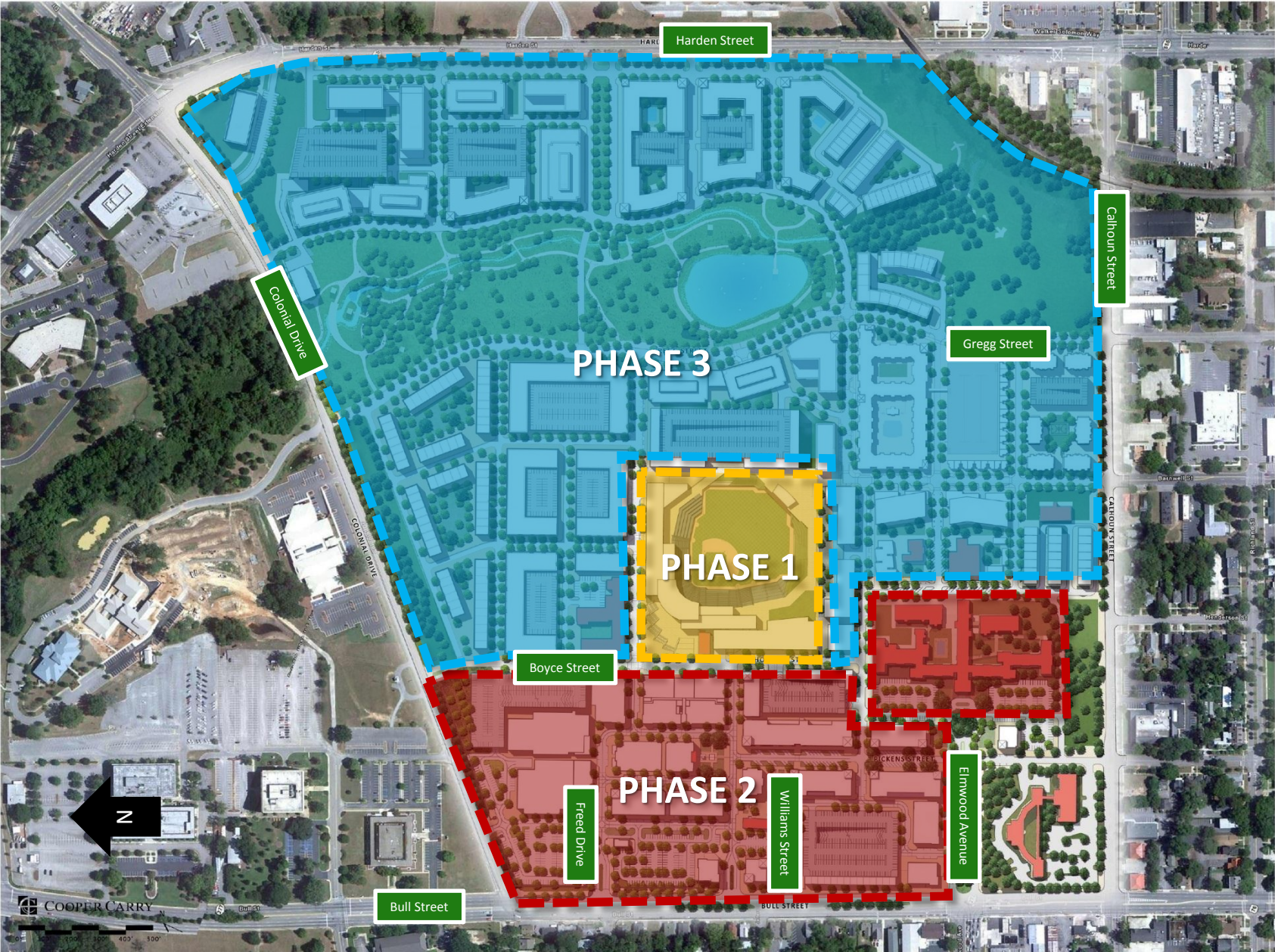
This map was prepared by:  
GIS/ColumbiaGIS.net  
City of Columbia - GIS Division  
2015

1:3,000  
1 inch = 250 feet  
0 250 500 1,000  
Feet

Document Name: Neighborhoods - Bull Street Properties  
Document Path: C:\GIS\MXDs\2015\2015\_BullStreet\Traffic\low\_resolution\_neighborhoods\_bullstreet.mxd

# BullStreet Mixed-Use Development

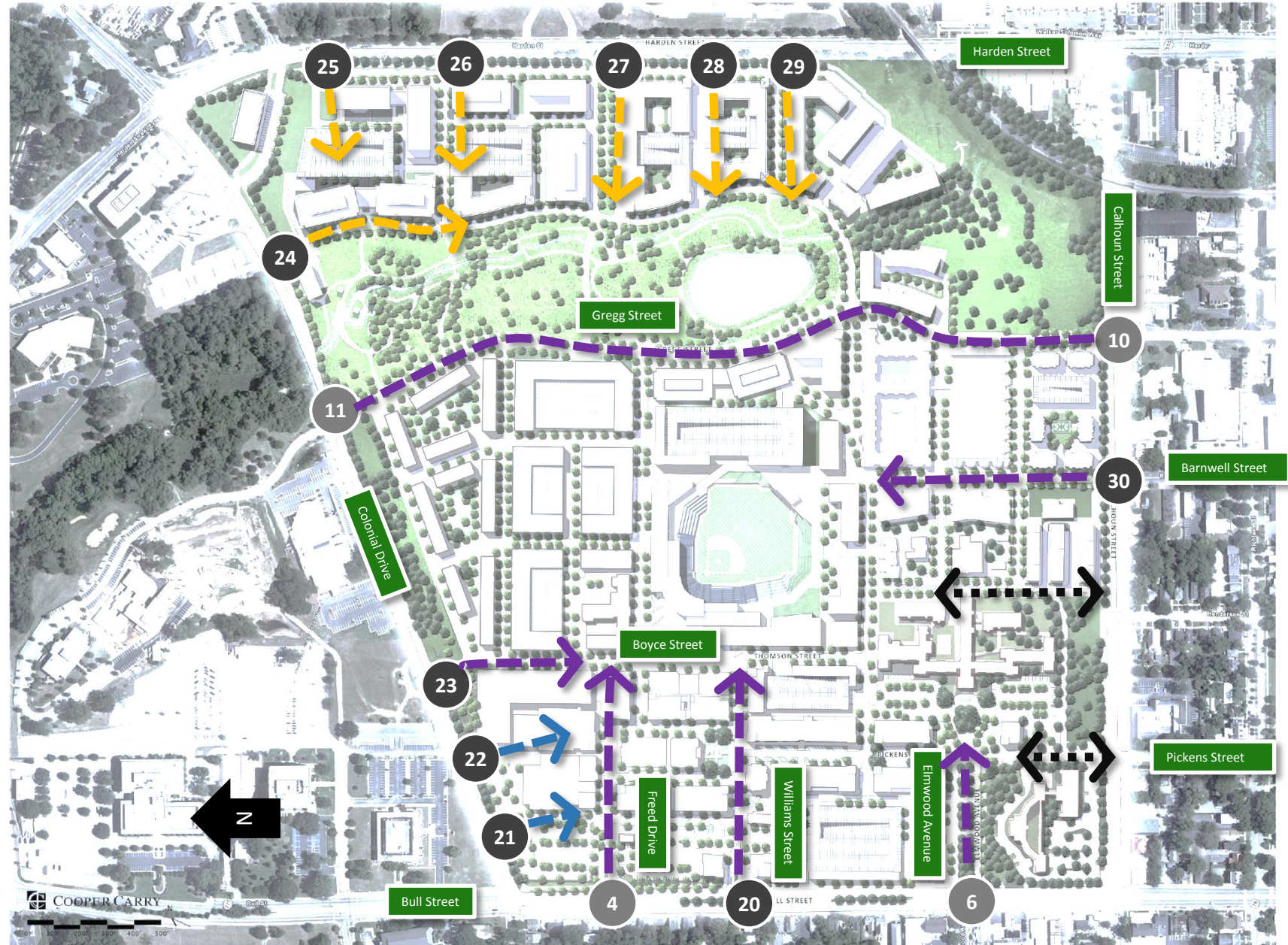
Figure 2 – Site Plan



# BullStreet Mixed-Use Development

Figure 2B – Site Access Key

- All Phases
- Phase 2
- Phase 3
- ←---→ Bike/Ped

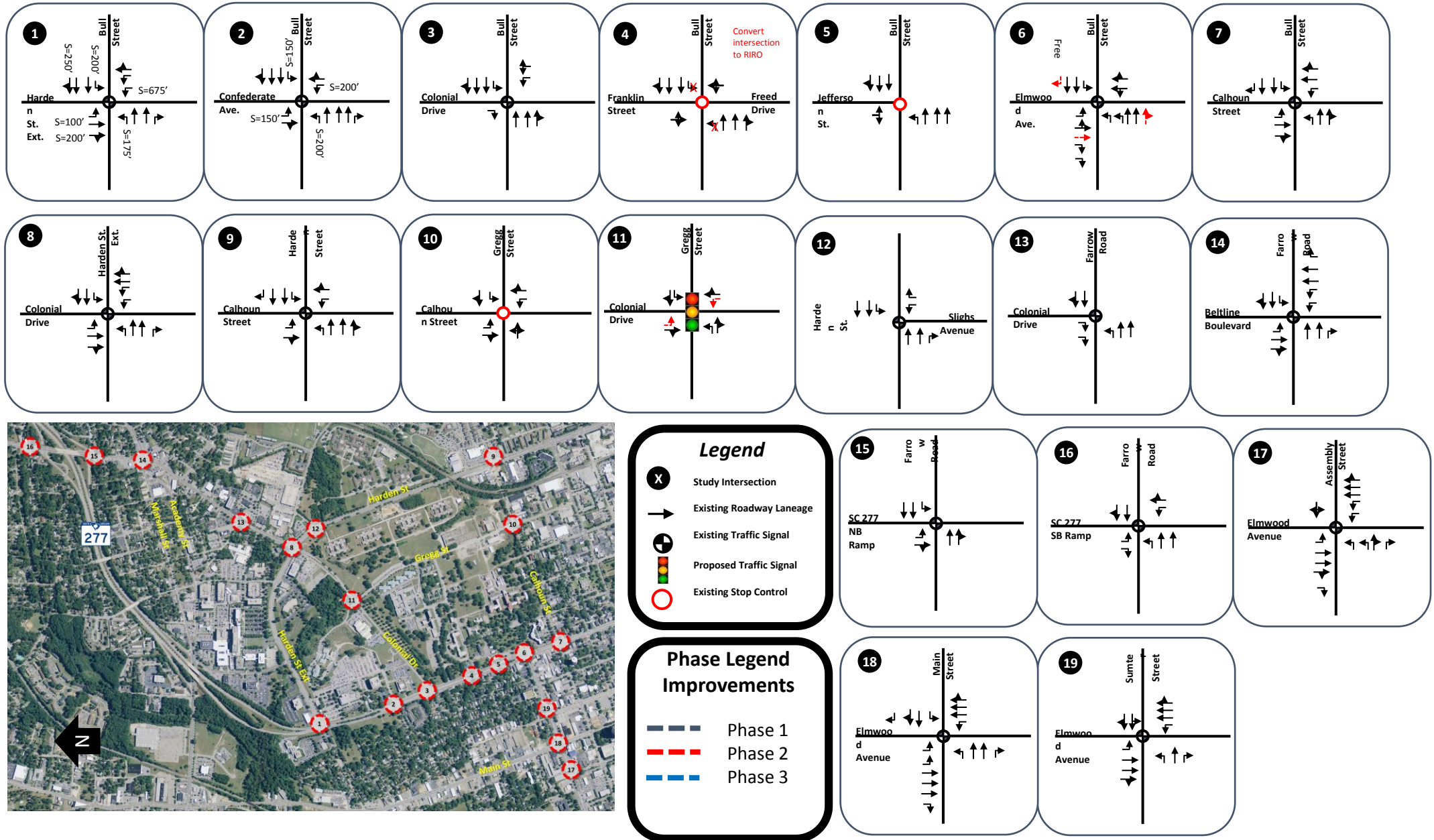


**Table 4 -Phase III Trip Generation**

Land Use	Intensity	Daily	AM Peak Hour			PM Peak Hour			
			Total	In	Out	Total	In	Out	
Φ <sub>1</sub>	Baseball Stadium	8,500 ST	1,679	15	10	5	306	306	0
	Shopping Center	26,250 SF	2,847	69	43	26	245	118	127
	General Office	78,750 SF	1,095	158	139	19	167	28	139
Φ <sub>2</sub>	General Office	69,050 SF	991	142	125	17	156	27	129
	Town Center	263,300 SF	7,001	176	128	48	436	205	231
	High-Turnover Sit Down Restaurant	22,438 SF	2,853	243	134	109	221	133	88
	Multiplex	10 SC	1,360	0	0	0	136	61	75
	Multifamily Apartments	479 DU	3,026	238	48	190	281	183	98
	Hotel	165 RM	1,104	87	51	36	99	50	49
	Quality Restaurant	55,462 SF	4,989	45	23	22	415	278	137
	Health/Fitness Club	25,000 SF	823	35	18	17	89	51	38
	Sporting Good Store	25,000 SF	1,180	6	5	1	118	57	61
Φ <sub>3</sub>	Research Facility	500,000 SF	3,820	527	437	90	502	75	427
	Shopping Center (Rates)	100,000 SF	4,270	96	60	36	371	178	193
	Continuing Care Facility	300 DU	1,319	56	36	20	60	23	37
	Single Family	100 DU	1,050	80	20	60	105	66	39
	General Office	500,000 SF	4,461	693	610	83	638	108	530
	Multifamily Apartments	1,315 DU	8,092	648	130	518	741	482	259
<b>Subtotal Phase I+II+III</b>			<b>51,960</b>	<b>3,314</b>	<b>2,017</b>	<b>1,297</b>	<b>5,086</b>	<b>2,429</b>	<b>2,657</b>
<b>Internal Capture</b>			<b>22,294</b>	<b>604</b>	<b>302</b>	<b>302</b>	<b>1,574</b>	<b>787</b>	<b>787</b>
<b>Pass-By</b>			<b>160</b>	<b>0</b>	<b>0</b>	<b>0</b>	<b>160</b>	<b>80</b>	<b>80</b>
<b>Multimodal Reduction Phase III (15%)</b>			<b>4,426</b>	<b>407</b>	<b>257</b>	<b>149</b>	<b>503</b>	<b>234</b>	<b>269</b>
<b>Net New External Trips Phase I+II+III</b>			<b>25,080</b>	<b>2,303</b>	<b>1,458</b>	<b>846</b>	<b>2,849</b>	<b>1,328</b>	<b>1,521</b>
<b>Net New External Trips Phase III (Net New III-Net New II)</b>			<b>12,776</b>	<b>1,699</b>	<b>1,118</b>	<b>583</b>	<b>2,121</b>	<b>904</b>	<b>1,216</b>

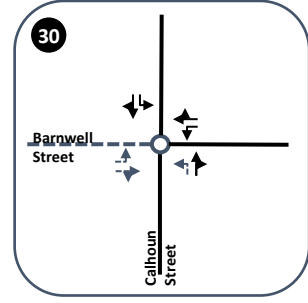
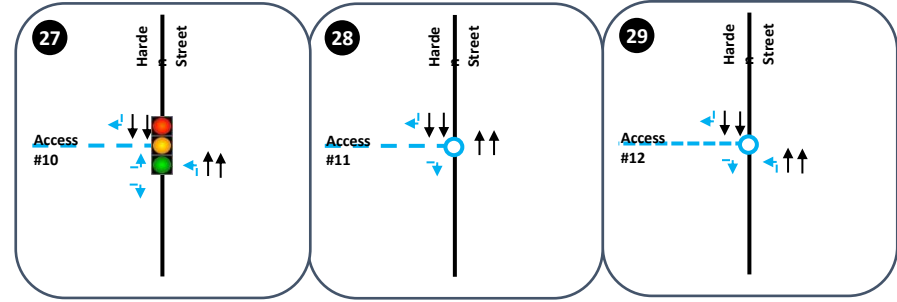
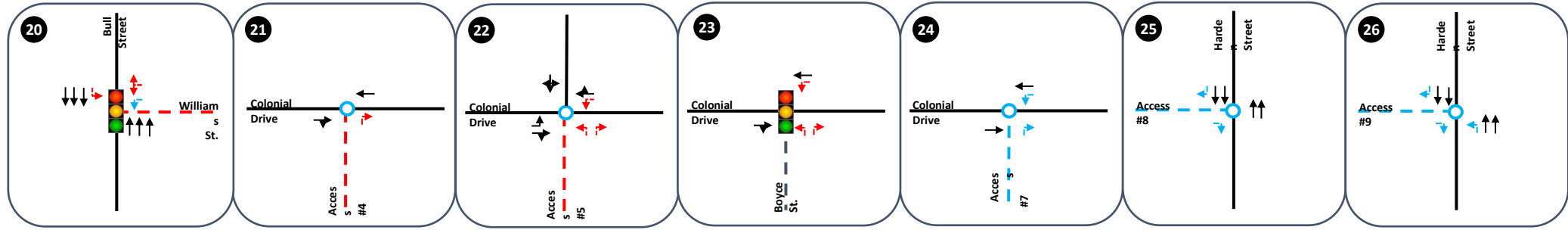
# BullStreet Mixed-Use Development

Figure 14 – Recommended Laneage



# BullStreet Mixed-Use Development

Figure 14 (cont.) – Recommended Laneage at Site Driveways



**Legend**

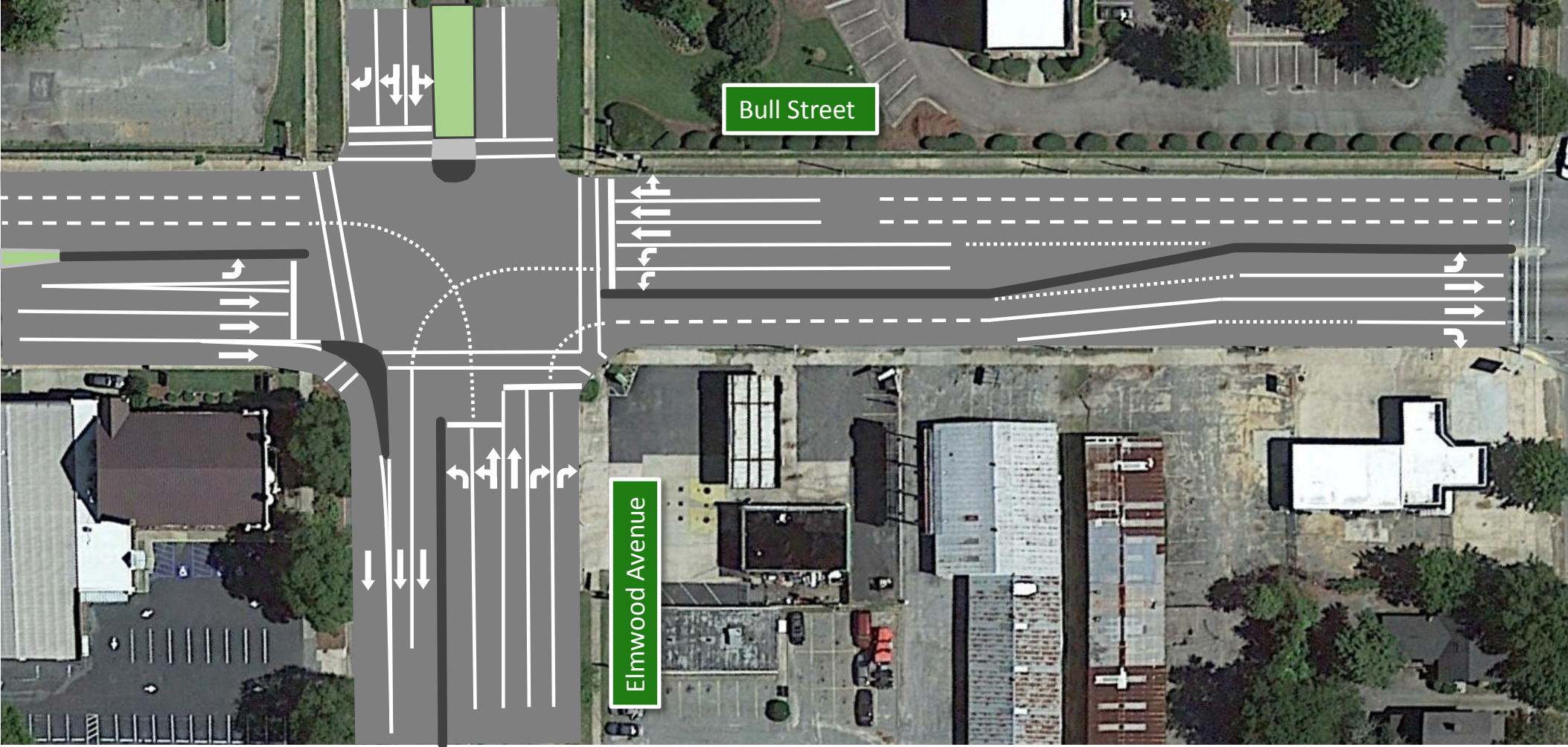
- X Study Intersection
- Turning Movement
- 🚦 Proposed Traffic Signal
- Proposed stop control
- XX AM Peak Hour Volume
- (XX) PM Peak Hour Volume

**Phase Legend Improvements**

- Phase 1
- Phase 2
- Phase 3

# BullStreet Mixed-Use Development

Bull Street at Elmwood Avenue





# BullStreet Mixed-Use Development

Calhoun Street at Barnwell Street



# BullStreet Mixed-Use Development

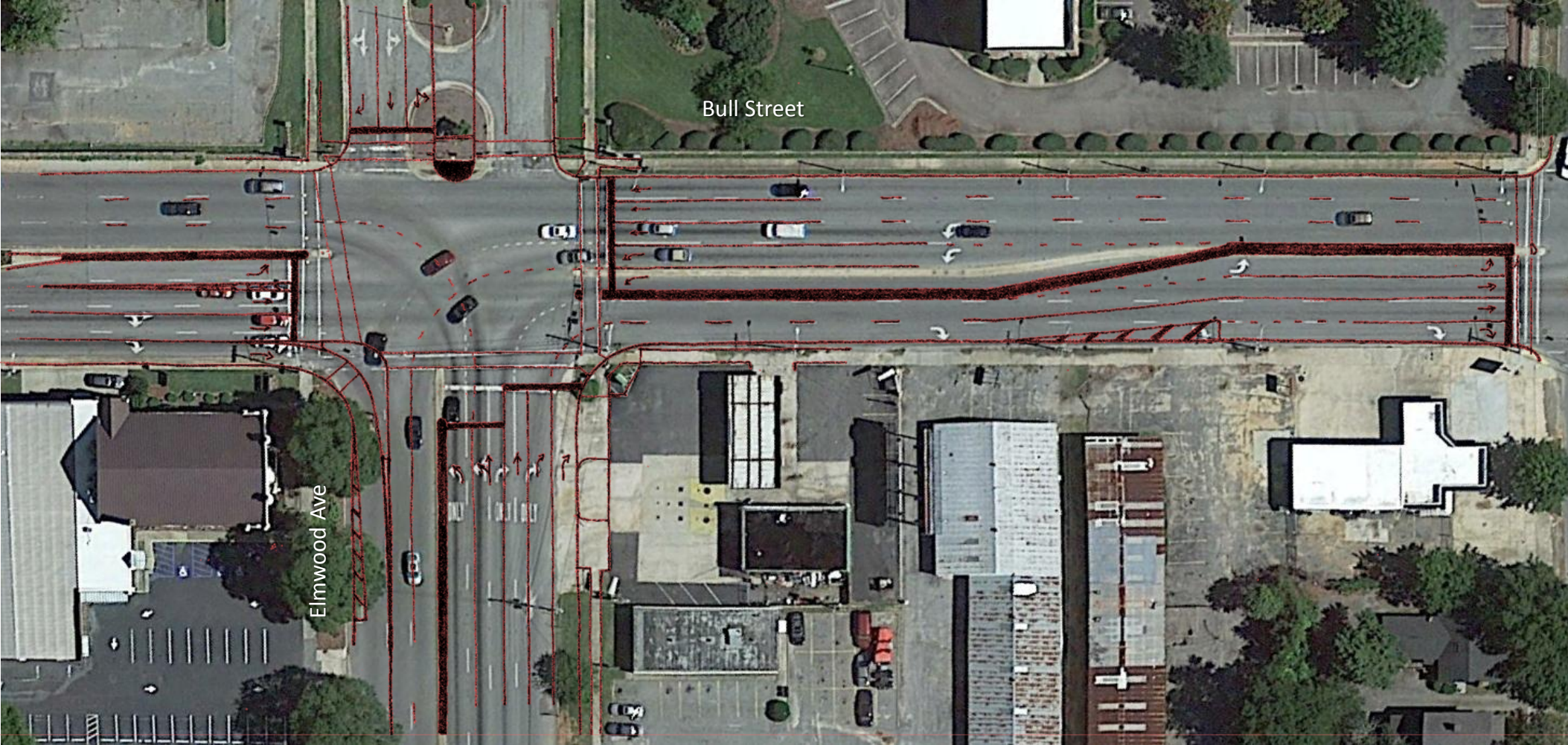
Bull Street at Williams Drive





# BullStreet Mixed-Use Development

Bull Street at Elmwood Avenue



# BullStreet Mixed-Use Development

Bull Street at Williams Drive

